

General Information

Location: MAGDEBURG/CITY DEU
ICAO/IATA: EDBM / ZMG
Lat/Long: N52° 04.4', E011° 37.6'
Elevation: 268 ft

Airport Use: Public
Daylight Savings: Observed
UTC Conversion: -1:00 = UTC
Magnetic Variation: 2.0° E

Fuel Types: 100 Octane (LL), Mogas, Jet A-1
Repair Types: Minor Airframe, Minor Engine
Customs: Yes
Airport Type: IFR
Landing Fee: Yes
Control Tower: No
Jet Start Unit: No
LLWS Alert: No
Beacon: Yes
Traffic Pattern Altitude: 1202 ft (934 ft AGL)

Sunrise: 0503 Z
Sunset: 1736 Z

Runway Information

Runway: 09
Length x Width: 3281 ft x 98 ft
Surface Type: asphalt
TDZ-Elev: 267 ft
Lighting: Edge
Displaced Threshold: 410 ft

Runway: 27
Length x Width: 3281 ft x 98 ft
Surface Type: asphalt
TDZ-Elev: 249 ft
Lighting: Edge, ALS

Communication Information

Bremen Radar Approach: 123.225
Magdeburg Information: 119.305 Out to 25 mi. AFIS

EDBM
MAGDEBURG/CITY

30 NOV 12

JEPPESEN MAGDEBURG/CITY, GERMANY

10-3

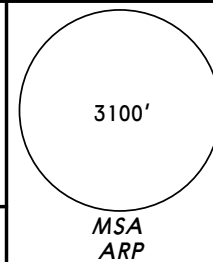
Eff 13 Dec

RNAV SID

BREMEN Radar
123.22

Apt Elev
268'

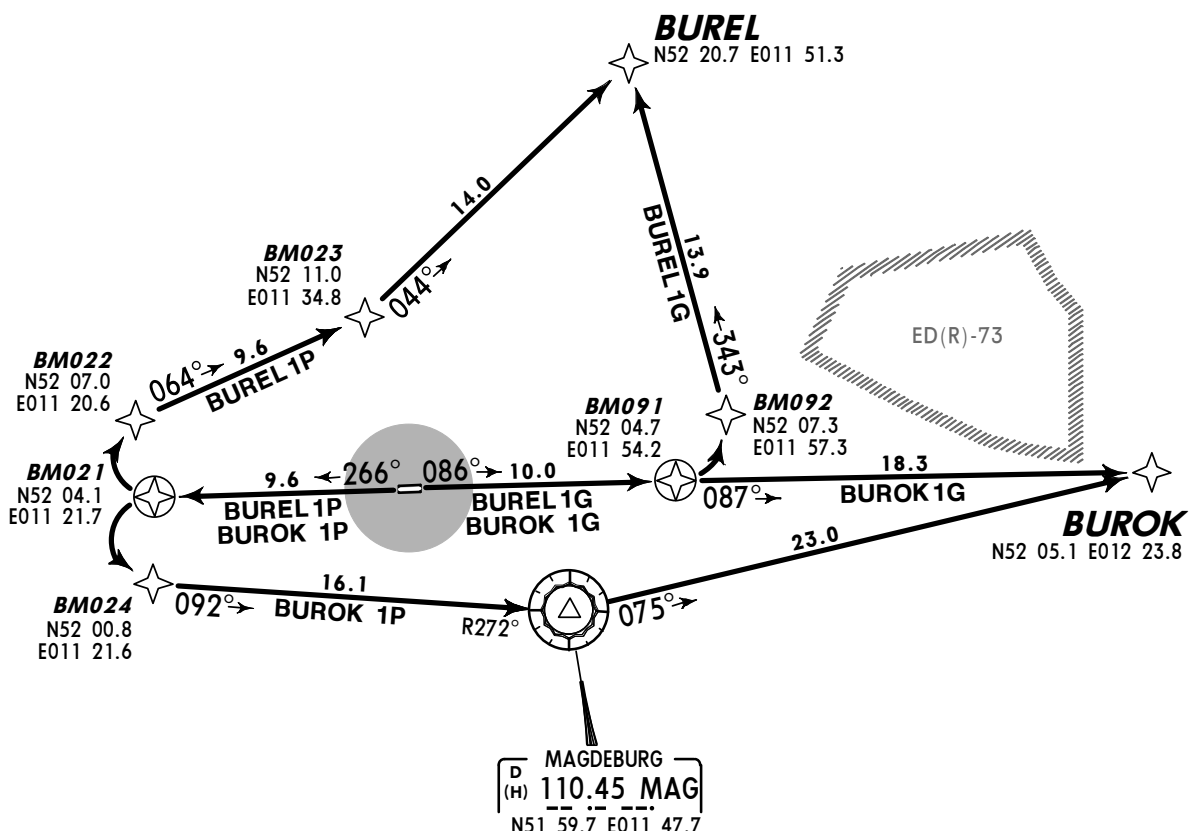
- Trans level: By ATC Trans alt: 5000'
1. Immediately after take-off contact BREMEN Radar.
 2. Departures entering controlled airspace when passing 2500' GND.
 3. SIDs are also noise abatement procedures. Strict adherence within the limits of aircraft performance is mandatory.



BUREL ONE GOLF (BUREL 1G) [BURE1G]
BUREL ONE PAPA (BUREL 1P) [BURE1P]
BUROK ONE GOLF (BUROK 1G) [BURO1G]
BUROK ONE PAPA (BUROK 1P) [BURO1P]

RWYS 09, 27 RNAV DEPARTURES
NOT TO BE USED DURING ACTIVITY OF NIGHT
LOW FLYING SYSTEM EXCEPT SID BUREL 1G

SPEED RESTRICTION
MAX 250 KT below FL100
or as by ATC.
Not applicable within airspace C.



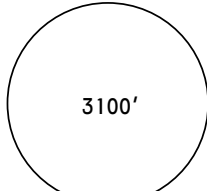
Initial climb clearance **4000'**

SID	RWY	ROUTING
BUREL 1G	09	(700+) - BM091 - BM092 - BUREL.
BUREL 1P	27	(700+) - BM021 - BM022 - BM023 - BUREL.
BUROK 1G ①	09	(700+) - BM091 - BUROK.
BUROK 1P ①	27	(700+) - BM021 - BM024 - MAG - BUROK.

① SID may not be available during military activity within ED(R)-73. In this case expect alternate route by ATC.

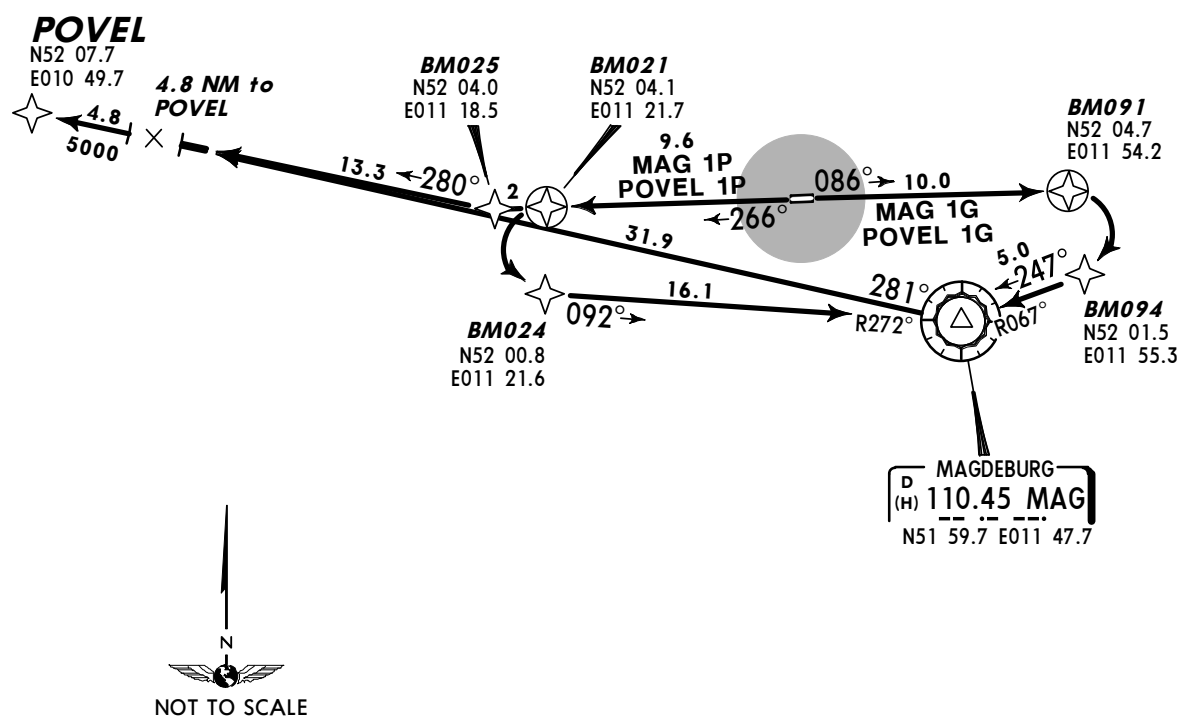
EDBM
MAGDEBURG/CITY

JEPPESEN MAGDEBURG/CITY, GERMANY
30 NOV 12 **(10-3A)** **Eff 13 Dec** **RNAV SID**

BREMEN Radar 123.22	Apt Elev 268'	Trans level: By ATC Trans alt: 5000' 1. Immediately after take-off contact BREMEN Radar. 2. Departures entering controlled airspace when passing 2500' GND. 3. SIDs are also noise abatement procedures. Strict adherence within the limits of aircraft performance is mandatory.	 3100' MSA ARP
------------------------	------------------	--	--

MAGDEBURG ONE GOLF (MAG 1G)
MAGDEBURG ONE PAPA (MAG 1P)
POVEL ONE GOLF (POVEL 1G) [POVE1G]
POVEL ONE PAPA (POVEL 1P) [POVE1P]
RWYS 09, 27 RNAV DEPARTURES
 NOT TO BE USED DURING ACTIVITY OF NIGHT LOW FLYING SYSTEM

SPEED RESTRICTION
 MAX 250 KT below FL100
 or as by ATC.
 Not applicable within airspace C.



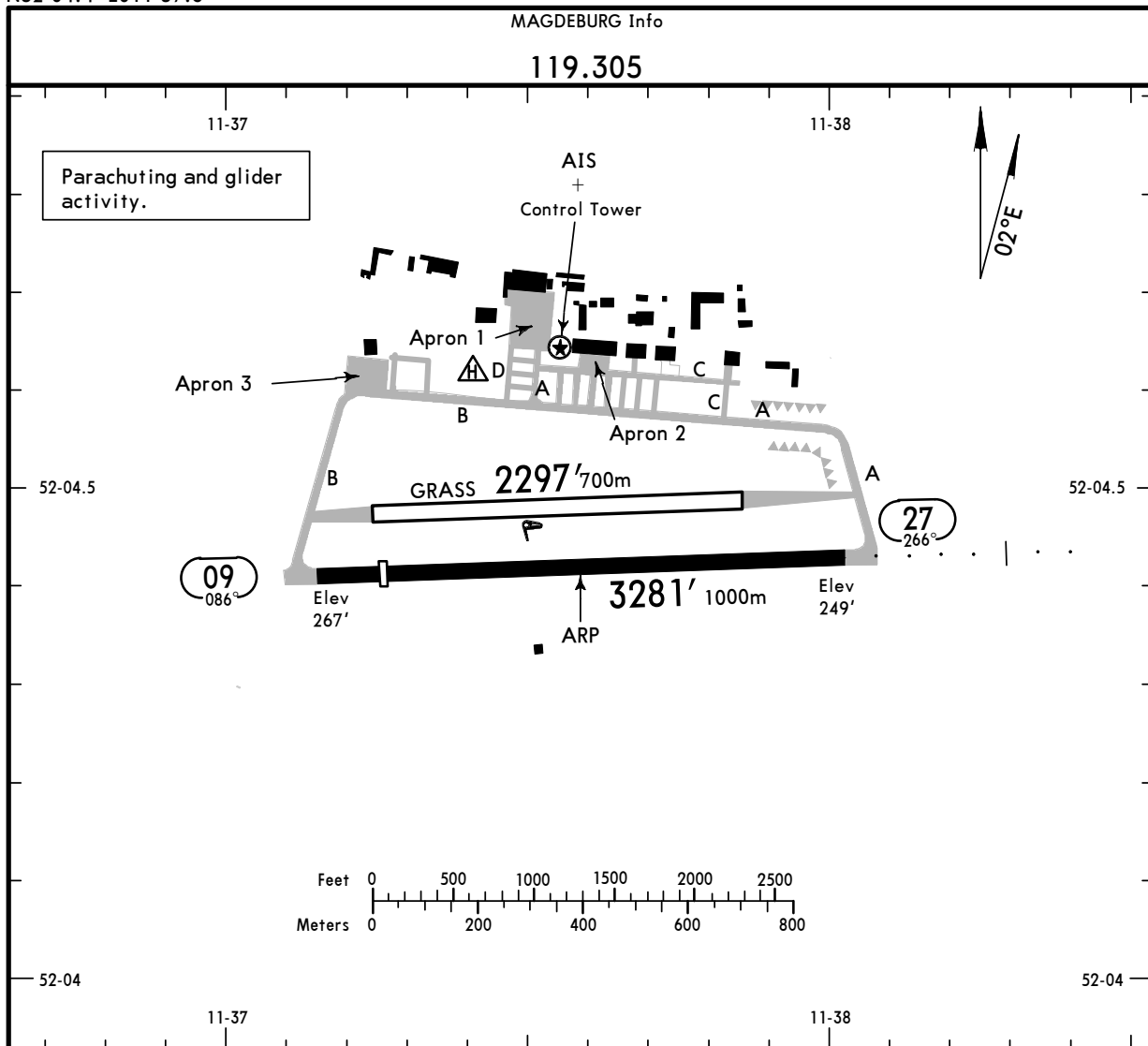
Initial climb clearance 4000'		
SID	RWY	ROUTING
MAG 1G	09	(700+) - BM091 - BM094 - MAG.
MAG 1P	27	(700+) - BM021 - BM024 - MAG.
POVEL 1G	09	(700+) - BM091 - BM094 - MAG - POVEL.
POVEL 1P	27	(700+) - BM025 - POVEL.

CHANGES: Ballflag withdrawn.

EDBM

Apt Elev **268'**
N52 04.4 E011 37.6

JEPPESEN MAGDEBURG/CITY, GERMANY
8 FEB 19 **(10-9)**
MAGDEBURG/CITY



ADDITIONAL RUNWAY INFORMATION

RWY		USABLE LENGTHS			WIDTH
		Threshold	LANDING BEYOND Glide Slope	TAKE-OFF	
09 27	HIRL PAPI-L(3.3°, MEHT 12')	2871' 875m		②	98'
	HIRL HIALS PAPI-L(3.3°, MEHT 12')			2871' 875m ②	30m
09 27	Grass runway				98' 30m

- ① Anti-skid layer.
- ② Additional 197' / 60m paved area in front of runway available for take-off.

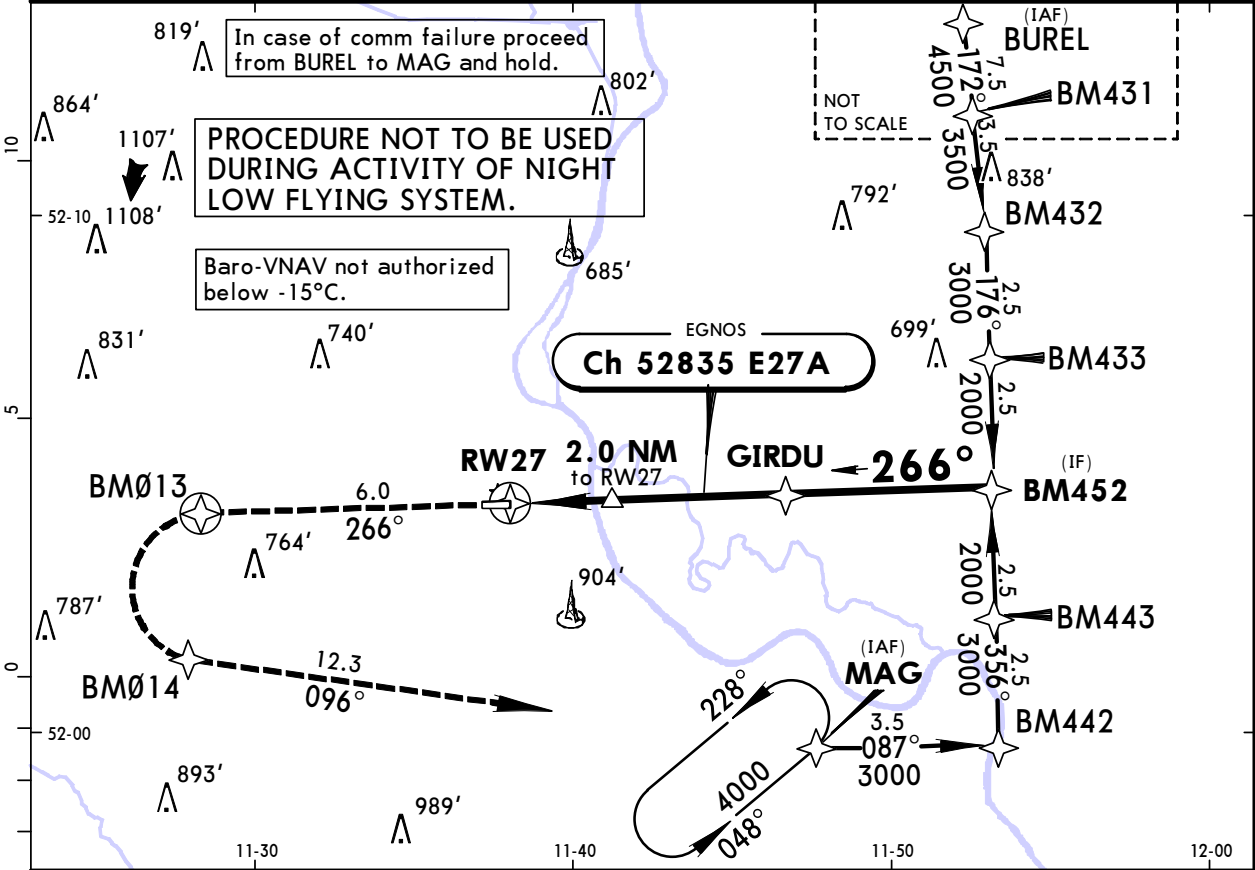
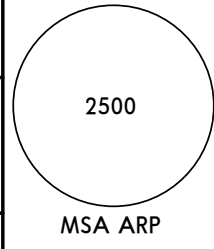
Standard		TAKE-OFF	
Low Visibility Take-off			
Day: RL & RCLM Night: RL		Day: RL or RCLM Night: RL	Adequate vis ref (Day only)
A	RVR 300m	400m	500m
B			
C			
D	NOT APPLICABLE		

EDBM
MAGDEBURG/CITY

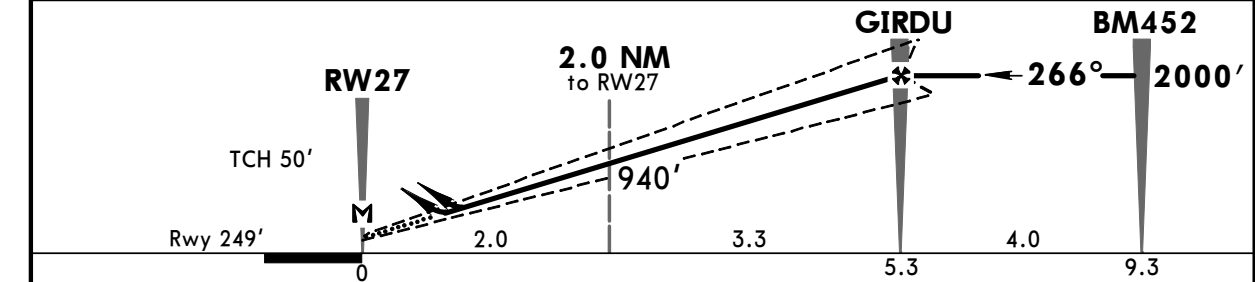


JEPPESSEN MAGDEBURG/CITY, GERMANY
8 FEB 19 **(12-1)** **CAT A & B** **RNAV (GPS) Rwy 27**

BREMEN Radar 123.225				MAGDEBURG Info 119.305	
BRIEFING STRIP™	EGNOS Ch 52835 E27A	Final Apch Crs 266°	Minimum Alt GIRDU 2000' (1751')	LNAV/VNAV DA(H) 549' (300')	Apt Elev 268' Rwy 249'
	MISSED APCH: Climb on track 266° to BM013 or 2000', whichever is later, then turn LEFT via BM014 on track 096° to MAG climbing to 4000'.				
	Alt Set: hPa (IN on req) Rwy Elev: 9 hPa Trans level: By ATC Trans alt: 5000' Arrivals leaving controlled airspace when passing 1000' AGL.				



DIST to RWY27	1.0	2.0	3.0	4.0	5.0	6.0
ALTITUDE	620'	940'	1260'	1580'	1900'	2210'



Gnd speed-Kts	70	90	100	120	140	160	HIALS PAPI BM013: 2000' whichever is later on 266°
Glide Path Angle 3.00°	372	478	531	637	743	849	
LPV, LNAV/VNAV: MAP at DA							
LNAV: MAP at RWY27							

PANS OPS	Standard LPV		STRAIGHT-IN LANDING RWY 27 LNAV/VNAV				LNAV CDFFA		CIRCLE-TO-LAND		
	DA(H) 609' (360')		DA(H) 549' (300')				DA/MDA(H) 610' (361')		Not authorized North of airport		
	ALS out		ALS out				ALS out		Max Kts		
	A	RVR 1200m	RVR 1500m	RVR 900m	RVR 1400m	RVR 1300m	RVR 1500m	100	710'	(442')	1500m
	B							135	1200'	(932')	1600m
C	NOT APPLICABLE								C	NOT APPLICABLE	
D	NOT APPLICABLE								D	NOT APPLICABLE	

MAGDEBURG/CITY

19-2 13 FEB 15



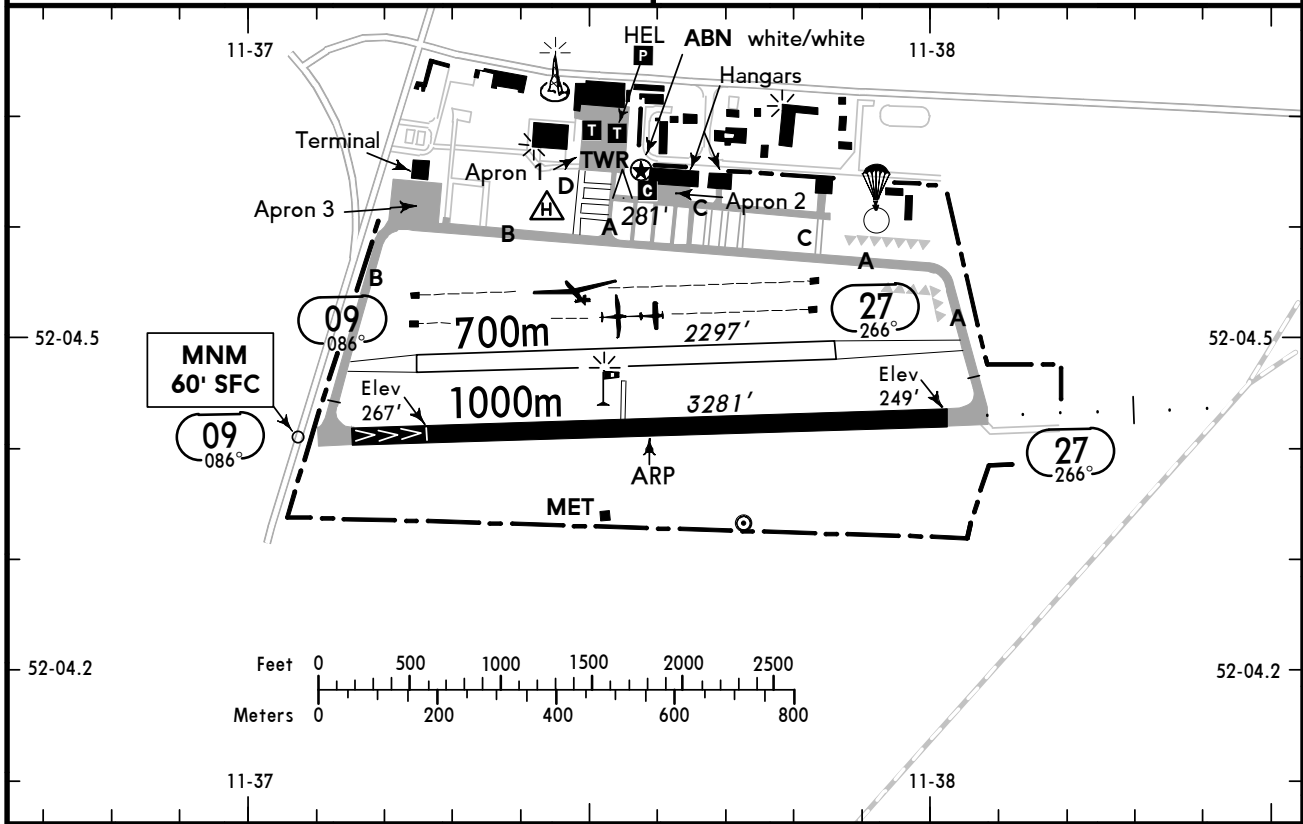
MAGDEBURG/CITY

GERMANY



(FIS)

BREMEN INFORMATION **132.650**



⊕ ABN - ALS 27 - PAPI (3.3°) - THR L - RL - TWYL "A" & "B" - WDI - OBSTL.

RWY No	Dimension (m) - Surface	TORA (m)	LDA (m)	Strength	Lights
09 27	1000 x 30 Asphalt	1000 ^①	875 1000	PCN 36/F/C/W/T ^②	⊕
09 27	700 x 30 Grass	700	700	2t MPW (5.7t MPW: PPR)	—

- ① Paved strips with 60m length in front of THR shall be used for TKOF.
Die befestigten Streifen 60m lang vor den THR können zum Start mitbenutzt werden.
- ② Antiskid layer.

Contact MAGDEBURG INFO at least 5 MIN prior to reaching the AD.

Within AD traffic listening watch shall be maintained.

No TKOF/LDG of powered ACFT on the asphalt and grass RWY as long as the yellow gliderwinch warning light is flashing.

MAGDEBURG INFO spätestens 5 MIN vor Erreichen des Platzes rufen.

Im Flugplatzverkehr ist ständige Hörbereitschaft aufrechtzuerhalten.

Kein Starten/Landen von Motorflugzeugen auf der Asphalt- und Graspiste solange die gelbe Segelschlepp-Warnleuchte blinkt.



Chart changes since cycle 05-2019

ADD = added chart, REV = revised chart, DEL = deleted chart.

ACT PROCEDURE IDENT

INDEX

REV DATE

EFF DATE

MAGDEBURG/CITY, (MAGDEBURG/CITY - EDBM)